

Hotel Name	Point of Contact	Suites in Contract	Notes	F&B Concession	Total Room Nights	Avg Room Nights
<a href="#">Charlotte Marriott City Center</a>	<a href="#">Hotel Website</a>	2	Pres - \$750, VP- \$350	Yes	625	155
<a href="#">Courtyard Marriott City Center</a>	<a href="#">Hotel Website</a>	Executive Boardrooms	Boardroom/Magnolia Meeting Room	Yes	456	106
<a href="#">Fairfield Inn &amp; Suites Marriott Uptown</a>	<a href="#">Hotel Website</a>	2		Yes	401	75
<a href="#">Hampton Inn Charlotte Uptown *</a>	<a href="#">Hotel Website</a>	Listed w/o count	Suites \$300	Yes	414	90
<a href="#">Hilton Garden Inn *</a>	<a href="#">Hotel Website</a>	Listed w/o count	Suites \$300	Yes	522	115
<a href="#">Holiday Inn Center City</a>	<a href="#">Hotel Website</a>	11	Suites \$350, move Furn	Yes	510	100
<a href="#">Hyatt House Center City</a>	<a href="#">Hotel Website</a>	King Studio Suites	Diamond \$499, Jewell \$399	No	271	60
<a href="#">Hyatt Place Downtown</a>	<a href="#">Hotel Website</a>	6	Suites \$259	Yes	471	106
<a href="#">Le Meridien/Sheraton</a>	<a href="#">Web 1</a>	<a href="#">8 Web 2</a>	Suite SH \$500, Jr Le \$600, Pres \$750	No F&B Statement	1571	400
<a href="#">Omni Charlotte Hotel</a>	<a href="#">Hotel Website</a>	16	King Parlor \$499, Jr. Suites \$519	Yes	479	116
<a href="#">Springhill Suites</a>	<a href="#">Hotel Website</a>	2	Retail or Queen - Comp, Hornet - \$500	Yes*	439	100
<a href="#">Westin</a>	<a href="#">Hotel Website</a>	16	Executive Suite \$500	No	1398	325
<a href="#">Hilton Charlotte Center</a>	<a href="#">Hotel Website</a>	6	Studio King Suite \$350	No	655	145
Total					6932	98



**MEET AT THE NEXUS  
OF HOTEL INNOVATION.**

Vice Presidential Suite 937 Sq Feet







Presidential Suite  
1187 Sq Feet













Magnolia Room - 75 people theater, 40 Banquets

Board Room up to 12

King Suite Living Room





Charlotte Gallery



Carolina Gallery



## Hilton Garden Inn Charlotte Uptown

### *Capacity Chart*

Meeting Space	Dogwood A	Dogwood B	Dogwood C	Dogwood AB	Dogwood BC	Dogwood ABC	Ivy
Dimensions	21 x24'	12'x24'	23'x24'	33'x24'	35'x24'	56'x24'	26'x31'
Square Feet	504	286	550	790	836	1340	914
U-SHAPE	10	8	16	12	16	35	21
CLASSROOM	12	8	20	16	30	60	24
ROUNDS	16	16	40	32	48	80	40
CRESCENT	10	8	15	10	15	50	40
THEATER	25	16	35	45	55	100	40
BOARDROOM	12	8	15	12	16	20	12
H-SQUARE	12	8	20	20	25	35	16













**Holiday Inn**

C WILLOTTE - CENTER CITY



1 Room Available

## Welcome to Hyatt House® Charlotte/Center City.

---

To the generous welcome that makes our house a Hyatt, and the spaces and places that make our guests feel more like residents. Relax in your suite or come down to enjoy our comfy spaces and inviting places that let your real-life routines roll on, even on the road. At Hyatt House, you're more than just a guest. **Come on inside.**

### Kitchen Suites

---

- Spacious studio or one-bedroom Kitchen Suites with separate living space, bedroom, and work area
- Fully equipped kitchen with a refrigerator, ice maker, microwave, dishwasher, stove, small appliances and utensils
- Comfortable bed featuring ultra-plush pillows, triple sheeting and a pillow-top mattress
- Complimentary wired and wireless Internet access
- Flat-panel TV
- A flexible and spacious work area
- Complimentary remote printing

### Munch and Mingle

---

- Complimentary Morning Spread with made-to-order Omelet Bar, yogurt, fresh fruit, savory options and more. Served every morning to guests in the Commons
- Convenient 24-hour H Market is perfect for grab-and-go shopping without the hassle.
- Local restaurant delivery service
- Grocery Shopping Service
- H Bar serves a wide selection of premium quality, thoughtfully crafted cocktails, beer and wine. The Sip + Snack menu offers shareable bites and meals.
- Room Service is available through HBAR:  
Monday - Saturday 4 p.m. - 11 p.m.  
Sunday 4 p.m. - 10 p.m.

### Life Around the House

---

- Always-available House Host to acquaint you with the hotel and neighborhood
- For visits of 30 days or longer, enjoy our Very Important Resident program, where our House Host will personalize an extended stay with your unique needs in mind
- Same-day dry cleaning services and 24-hour coin-operated laundry room
- Our Borrows menu offers must-have items you forgot or didn't have room to pack.
- Earn free nights with no blackout dates with World of Hyatt.

### Spaces and Places

---

- Make a splash in our pool
- 24/7 Workout Room with cardio and fitness equipment with Cardio Theatre
- Free computer access for guests with high-speed internet and printing in the Commons
- Meeting and training facilities for group events or small meetings

---

**We're waiting to welcome you.**  
Visit [hyatthouse.com](http://hyatthouse.com) or call 866 974 9288 to plan your visit.

King Terrace Suite 567 Sq ft



Jewel Suite 567-640 Sq Ft separate living area



Meeting Space?





CJs Private Event Venue



Executive Suite Living Area



Jr Suite Dining Area



Executive Suite Dining Area



Presidential Suite Kitchen



Presidential Suite Dining



Presidential Suite Living



City Lights Rooftop





One Bedroom Suite Living Area



One Bedroom Suite Dining Area

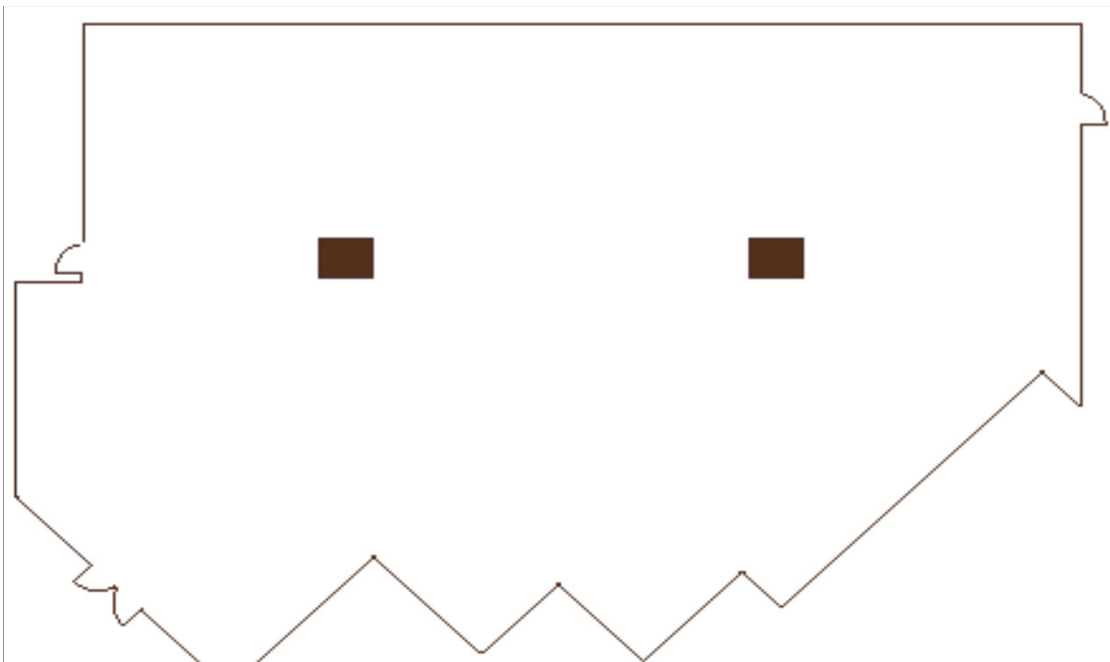


Junior Suite Living Area



Craft City Social Club





*Charlotte Specifications*

ROOM	FLOOR	SQUARE FOOTAGE	DIMENSIONS	CEILING HEIGHT	PORTABLE WALLS	THEATER	CLASSROOM 18"	BANQUET 66"	RECEPTION	HOLLOW SQUARE	EXHIBITS 8 x 10
Grand Ballroom	Lobby	7,320	60' x 122'	16'	No	811	501	550	768	-	45
Poplar/Dogwood	Lobby	3,840	60' x 64'	16'	Yes	425	240	260	275	90	24
Willow/Birch	Lobby	3,480	60' x 58'	16'	Yes	375	195	240	250	84	21
Ballroom Foyer	Lobby	2,400	-	16'	No	-	-	-	200	-	-
Willow	Lobby	1,500	60' x 25'	16'	Yes	150	90	100	150	56	9
Birch	Lobby	1,980	60' x 33'	16'	Yes	222	120	150	200	60	12
Dogwood	Lobby	1,980	60' x 33'	16'	Yes	222	120	150	200	60	12
Poplar Room	Lobby	1,860	60' x 31'	16'	Yes	200	120	150	200	55	9
Pine	Lobby	620	37' x 20'	16'	Yes	50	24	40	60	26	-
Magnolia	Lobby	620	37' x 20'	16'	Yes	50	24	40	60	26	-
Poplar	Lobby	620	37' x 20'	16'	Yes	50	24	40	60	26	-
Oak Room	Lobby	1,219	23' x 53'	10'	Yes	125	60	80	126	44	-
Juniper	Lobby	736	23' x 32'	10'	Yes	65	35	50	90	30	-
Oak	Lobby	483	23' x 21'	10'	Yes	40	20	30	50	20	-
Cypress	Lobby	3,024	63' x 48'	10'	No	250	70	200	250	40	-
Pomodoro	Lobby	1,775	71' x 25'	10'	Yes	208	81	120	125	60	50
Salon A	Lobby	1,000	40' x 25'	10'	Yes	150	54	80	80	36	30
Salon B	Lobby	775	37' x 25'	10'	Yes	50	24	40	30	30	24
Mecklenburg Suite	15	540	27' x 20'	9'	No	-	-	-	40	-	6
Cedar Room	2nd	432	27' x 16'	8'	No	40	12	30	40	-	22
Maple Room	2nd	432	27' x 16'	8'	No	40	12	30	40	-	22
Parlor	2,4,6, 8,10,12	432	27' x 16'	8'	No	-	-	-	25	-	6

Meeting room capacities are determined by use of the "Arranger & Comfort Calculator," a standardized meeting room capacity measurement system used by Meeting Professionals International.

Executive Suite

640 sq ft



Parlor Suite 740 Sq Ft.

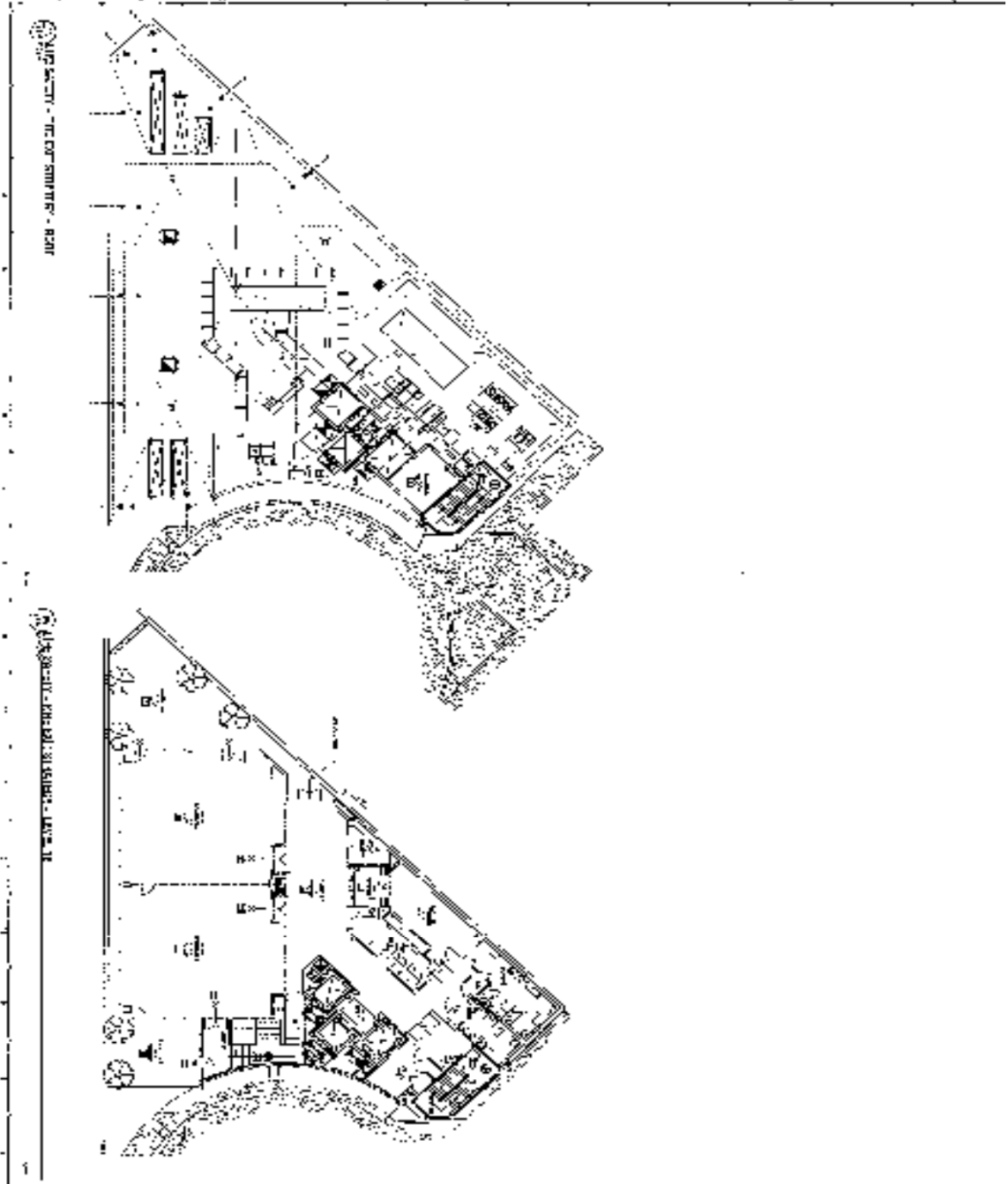


Scott and Sheppard Suites



Mecklenburg Suite - No Picture





**LEGEND**

- 1. EXISTING BUILDING
- 2. EXISTING WALL
- 3. EXISTING WINDOW
- 4. EXISTING DOOR
- 5. EXISTING PLANT
- 6. EXISTING ROAD
- 7. EXISTING FENCE
- 8. EXISTING UTILITY
- 9. EXISTING LANDSCAPE
- 10. EXISTING SITE
- 11. EXISTING SITE
- 12. EXISTING SITE
- 13. EXISTING SITE
- 14. EXISTING SITE
- 15. EXISTING SITE
- 16. EXISTING SITE
- 17. EXISTING SITE
- 18. EXISTING SITE
- 19. EXISTING SITE
- 20. EXISTING SITE

**NOTES**

1. ALL DIMENSIONS ARE IN METERS.

2. ALL WALLS ARE 200 MM THICK UNLESS OTHERWISE SPECIFIED.

3. ALL WINDOWS ARE 1200 MM HIGH AND 1500 MM WIDE UNLESS OTHERWISE SPECIFIED.

4. ALL DOORS ARE 2000 MM HIGH AND 900 MM WIDE UNLESS OTHERWISE SPECIFIED.

5. ALL PLANTS ARE TO BE MAINTAINED AND REPLACED AS NECESSARY.

6. ALL ROADS ARE TO BE MAINTAINED AND REPAIRED AS NECESSARY.

7. ALL FENCES ARE TO BE MAINTAINED AND REPAIRED AS NECESSARY.

8. ALL UTILITIES ARE TO BE MAINTAINED AND REPAIRED AS NECESSARY.

9. ALL LANDSCAPE ARE TO BE MAINTAINED AND REPAIRED AS NECESSARY.

10. ALL SITE ARE TO BE MAINTAINED AND REPAIRED AS NECESSARY.

11. ALL SITE ARE TO BE MAINTAINED AND REPAIRED AS NECESSARY.

12. ALL SITE ARE TO BE MAINTAINED AND REPAIRED AS NECESSARY.

13. ALL SITE ARE TO BE MAINTAINED AND REPAIRED AS NECESSARY.

14. ALL SITE ARE TO BE MAINTAINED AND REPAIRED AS NECESSARY.

15. ALL SITE ARE TO BE MAINTAINED AND REPAIRED AS NECESSARY.

16. ALL SITE ARE TO BE MAINTAINED AND REPAIRED AS NECESSARY.

17. ALL SITE ARE TO BE MAINTAINED AND REPAIRED AS NECESSARY.

18. ALL SITE ARE TO BE MAINTAINED AND REPAIRED AS NECESSARY.

19. ALL SITE ARE TO BE MAINTAINED AND REPAIRED AS NECESSARY.

20. ALL SITE ARE TO BE MAINTAINED AND REPAIRED AS NECESSARY.

**SCALE**

1:100

**DATE**

10/10/2023

**PROJECT**

ARCHITECTURAL SITE PLAN

**DESIGNER**

ARCHITECT

**CLIENT**

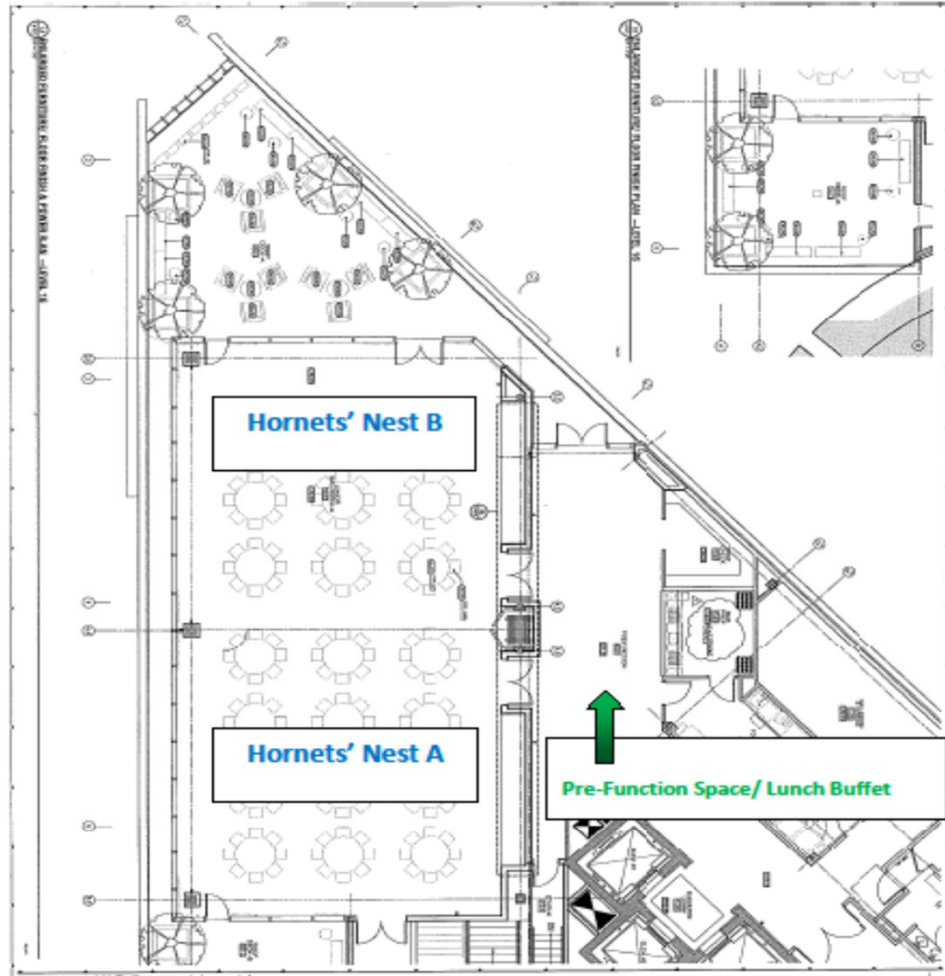
ARCHITECT

**LOCATION**

ARCHITECT

**NO.**

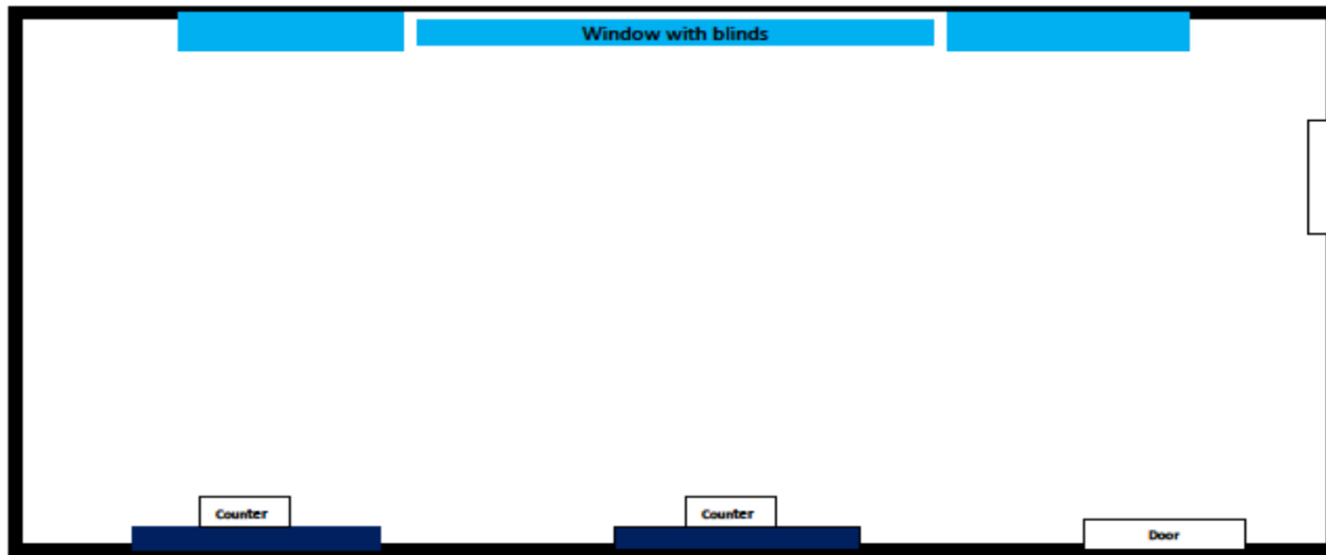
10/10/2023



Room	Sq. Ft.	Size	Classroom	Banquet	Theater	Conference	Hollow Square
<b>Hornets Nest</b>	3,120	40' x 78'	120	180	350	50	---
<b>Hornets A</b>	1,560	40' x 39'	60	75	150	35	35
<b>Hornets B</b>	1,560	40' x 39'	60	75	150	35	35
<b>Queen City</b>	1,104	46'x25'	30	50	120	30	30
<b>Retail</b>	685	23'x25'	20	40	60	15	24

60 crescent rounds in hornets nest a or b

Queen City Room – 2<sup>nd</sup> Floor  
1,104 sq ft  
46 ft x 25 ft



Queen City Meeting Room



Hornets Nest



Hornets Nest Bar



Presidential Suite



