

NGAUS 2026 HOTEL PACKET



HOTEL POC

MIKE STURM
317-670-4506

MRSTURM77@GMAIL.COM

NGAI POC

JEFF COOMLER
317-850-7308

JEFFREY.COOMLER@NGAI.NET



DOWNTOWN INDIANAPOLIS HOTELS

147th General Conference & Exhibition

National Guard Association of the United States | August 28-31, 2026



Hilton Indianapolis Hotel & Suites

120 West Market Street, Indianapolis IN 46204

Rooms



Traditional Queen
\$133/night



Traditional King
\$133/night



Deluxe King
\$133/night

Room Specs

Traditional Queen

Generous and spacious guest room with down duvets and crisp linen on one King or two Queen sized beds. With 315- 514 square foot of space, these rooms feature a large functioning work desk and a comfortable chair and ottoman. Wake up with complimentary coffee provided with a coffeemaker and a refrigerator.

These rooms also feature a hairdryer, full sized iron and board.

42 Total

Traditional King

A generous and spacious guest room with down duvets and crisp linen on one King or two Queen sized beds. With 315- 514 square foot of space, these rooms feature a large functioning work desk and a comfortable chair and ottoman. Wake up with complimentary coffee provided with a coffeemaker and a refrigerator.

These rooms also feature a hairdryer, full sized iron and board.

104 Total

Deluxe King

Unwind from your day in this first tier spacious guest room suite featuring 465-585 square foot of space to relax. Featuring all the standard amenities of the Traditional Queen/King rooms: coffeemaker and complimentary coffee, work desk, comfortable chair and ottoman, hairdryer, iron and board. In addition, these rooms feature a Queen-sized Sofa

Sleeper and seating area and a refrigerator.

37 Deluxe Kings with 12 additional Accessible Deluxe Kings

Suites



Queen Suite
\$269/night



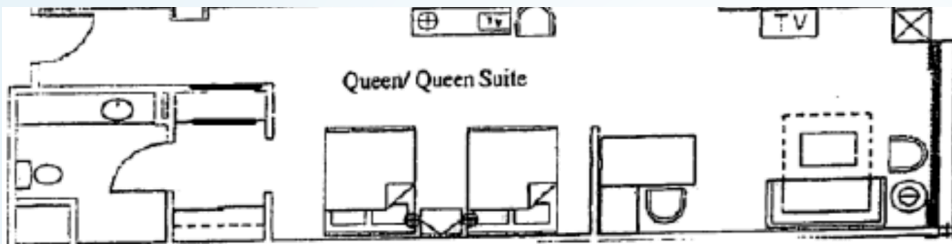
King Suite
\$269/night



Presidential Suite
\$369/night

Suite Floorplans

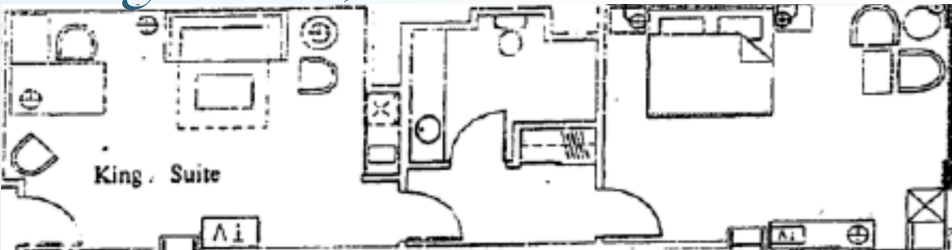
Queen Suite - 117 Total



Queen Suite

With spacious separate sleeping and living areas, these rooms are perfect for families or a longer term stay. These suites include all the standard conveniences along with separate parlor which includes a seating area and Queen sleeper sofa, amenity cabinet with a refrigerator.

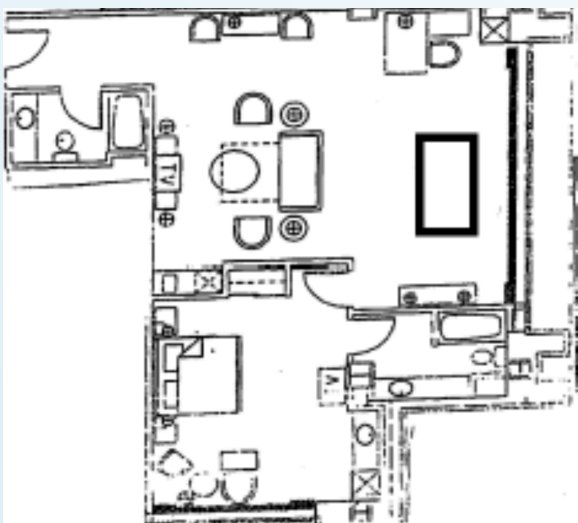
King Suite - 30 Total



King Suite

With spacious separate sleeping and living areas, these rooms are perfect for families or a longer term stay. These suites include all the standard conveniences along with separate parlor which includes a seating area and Queen sleeper sofa, amenity cabinet with a refrigerator.

Presidential Suite - 10 Total



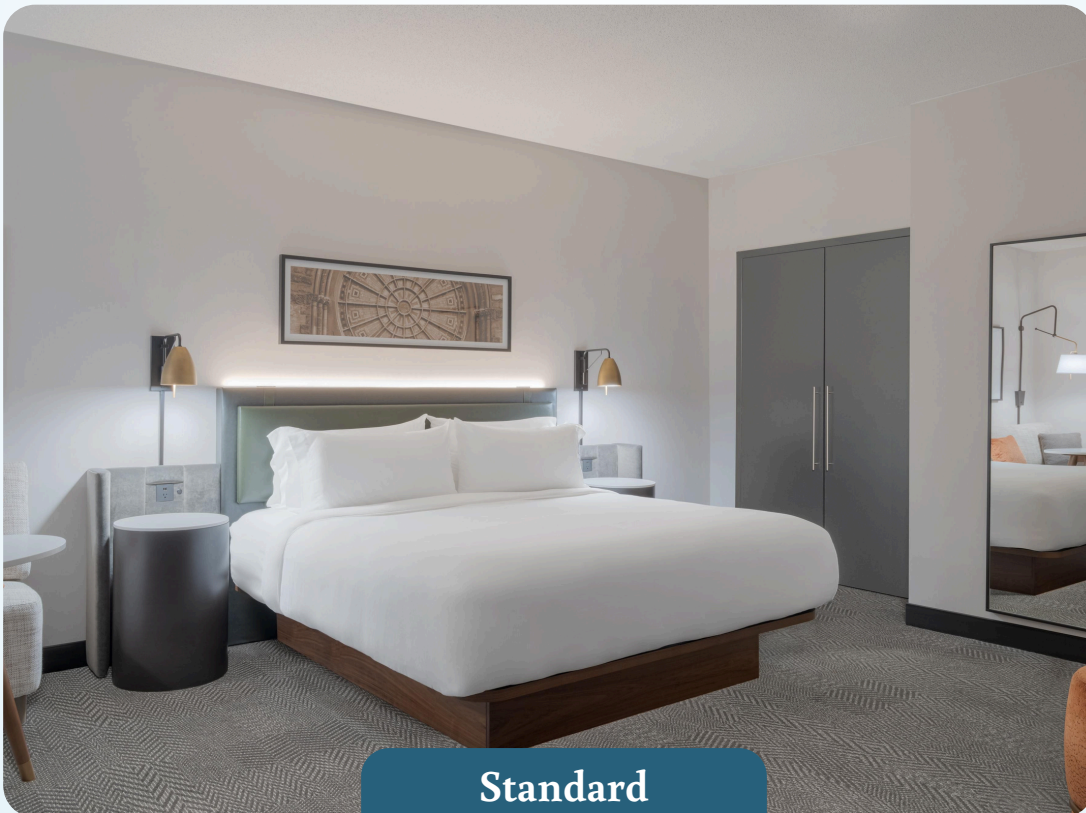
Presidential Suite

Suites include all the standard conveniences along with separate 710 square foot parlor which includes a seating area and Queen Sofa Sleeper, wet bar with a sink, and a refrigerator which makes this a perfect space for the entertainment center. A conference table is also in the parlor, able to seat eight, allowing our guests to stay connected. Separated from the parlor by doors is the luxurious sleeping area. In total this suite is 1040 square foot.

Crowne Plaza

123 West Louisiana, Indianapolis IN 46225

Rooms



Standard
\$152/night

Choice of 2 Double Beds, 1 King Bed, 1
Queen Bed, or 2 Queen Beds
No other information provided.

Suites



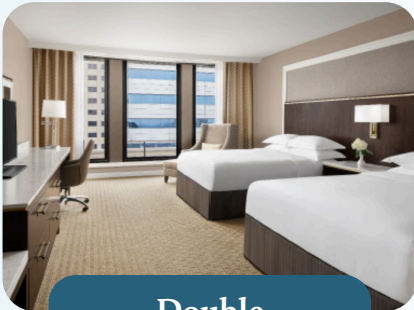
King Suite
\$209/night

King Bed. No other information
provided.

Hyatt Regency

One South Capitol Ave, Indianapolis IN 46204

Rooms



Double

167 @ \$152/night
125 @ \$219/night



King

167 @ \$152/night
125 @ \$219/night



Corner King

167 @ \$152/night
125 @ \$219/night

Room Specs

Double

Enjoy space and convenience in the middle of downtown. Set up a play yard or crib for the youngest family members, simplify meals by storing leftovers, snacks and drinks in the minifridge and brew your morning coffee in-room. No square footage provided.

King

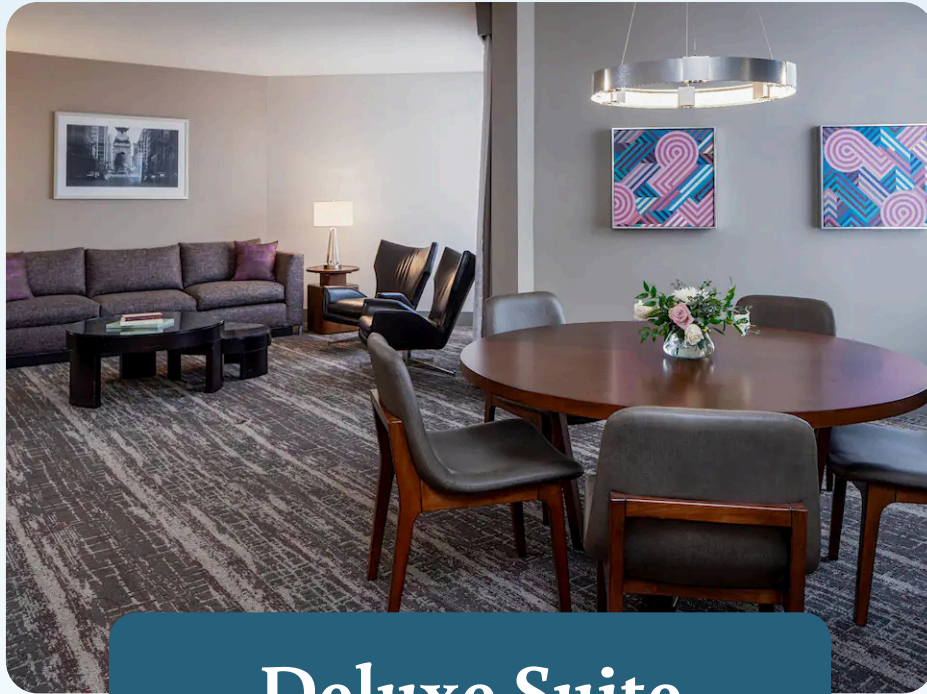
Designed for relaxation, this room features a welcoming seating area by the window with views of Indianapolis outside. A sleeper sofa provides bonus space, and a full-length mirror lets you get ready for a meeting or a night out. 330 square feet.

Corner King

Surround yourself with urban views. This inviting hotel room has plenty of sunlight and designated work and seating areas. Breakfast by the window, work at the desk, and in the evenings stretch out on the sofa with the LED TV. 410 square feet.

All rooms include mini fridge.

Suites



Deluxe Suite \$650/night

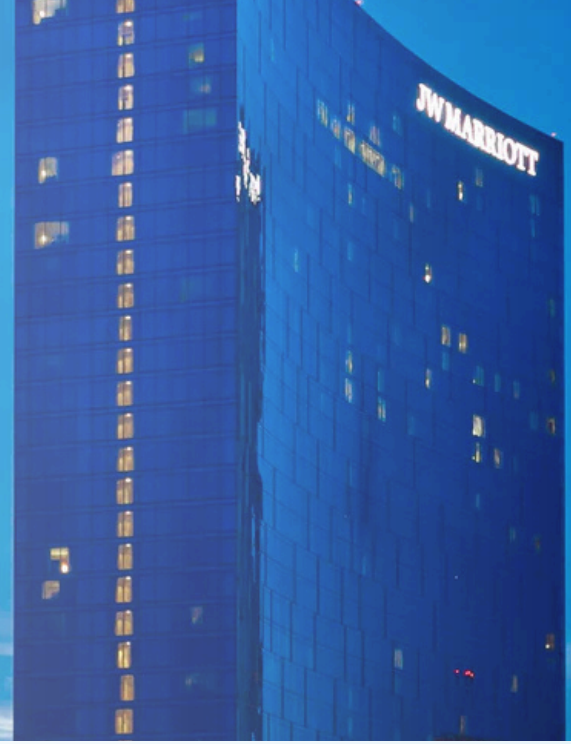
Deluxe Suite

Lounge in this sophisticated two bedroom suite featuring a parlor and spectacular views. Suite is 660 square feet. Enjoy one or two connecting bedrooms, one with a king bed and one with two double beds. This is a standard suite.

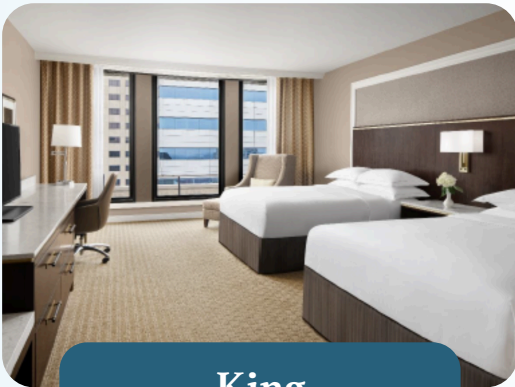
- One- or two-bedroom suite with one king and two double beds
- Separate work area with oversize desk and enhanced lighting
- Plasma TVs with cable/satellite channels
- Individual climate control
- Aquafresh Extreme Clean toothpaste amenities
- Coffee maker
- Minifridge

JW Marriott

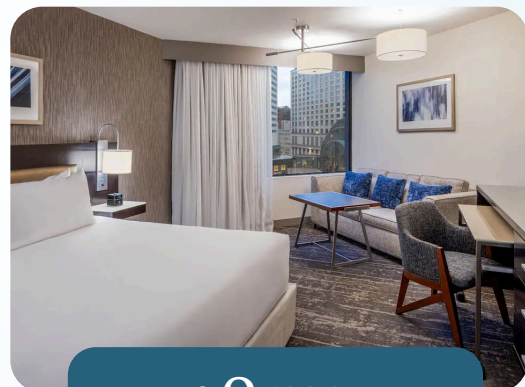
10 South West St., Indianapolis IN 46204



Rooms



King
\$140/night



2 Queen
\$140/night

Room Specs

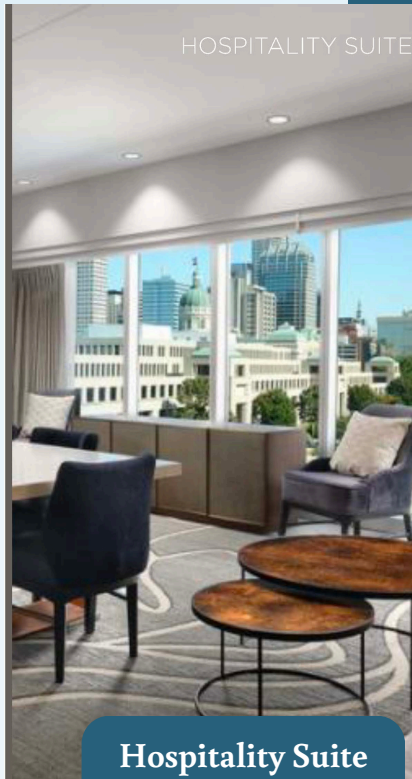
King

Deluxe Room 1 King, 1 King, 403sqft/36sqm-479sqft/43sqm, Wireless internet, for a fee, Wired internet, for a fee, Coffee/tea maker

2 Queen

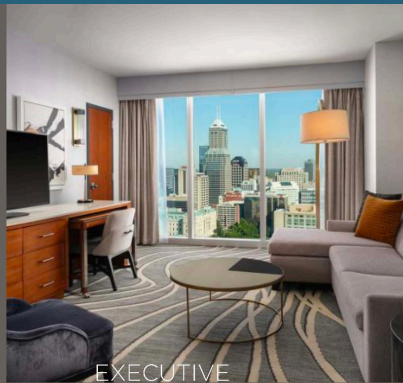
Deluxe Room 2 Queen Beds, 2 Queen, 403sqft/36sqm-479sqft/43sqm, Wireless internet, for a fee, Wired internet, for a fee, Coffee/tea maker

Suites



HOSPITALITY SUITE

Hospitality Suite
\$299/night



EXECUTIVE SUITE

Executive Suite
\$399/night



PRESIDENTIAL BATH



PRESIDENTIAL LIVING

Presidential Suite
\$699/night

Presidential Suite

1 King, Bathrooms: 1.5,
1635sqft/147sqm-1778sqft/160sqm,
Living/sitting area, Dining area,
Wireless internet, for a fee, Wired
internet, for a fee, Coffee/tea maker

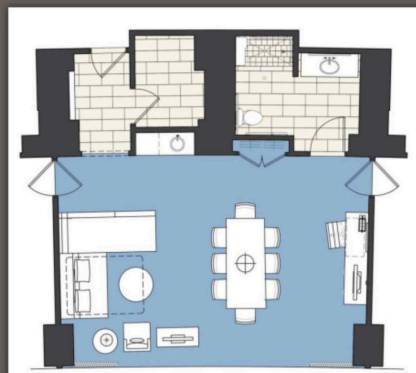


JW MARRIOTT
PRESIDENTIAL SUITE (3)

JW MARRIOTT



DELUXE ONE BEDROOM
EXECUTIVE SUITE (18)



JW MARRIOTT
HOSPITALITY SUITE (4)

Executive Suite

One Bedroom Suite, 1 King,
Bathrooms: 1.5, 842sqft/76sqm-
865sqft/78sqm, Living/sitting area,
Wireless internet, for a fee, Wired
internet, for a fee, Coffee/tea maker

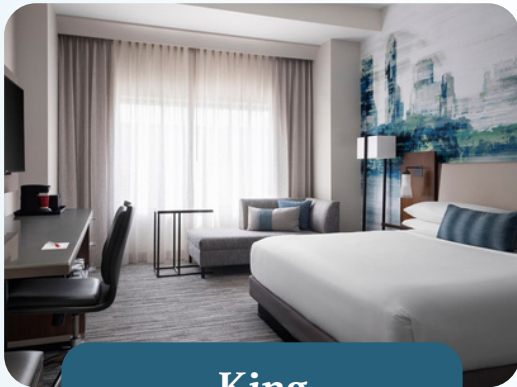
Hospitality Suite

No additional information. See
Floorplan.

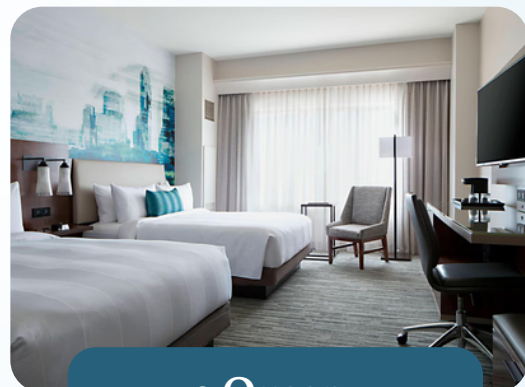
Indianapolis Marriott Downtown

350 West Maryland St., Indianapolis IN 46225

Rooms



King
\$140/night



2 Queen
\$140/night

Room Specs

King

Standard King, 1 King, 215sqft/19sqm-372sqft/33sqm, Living/sitting area, Wireless internet, for a fee, Coffee/tea maker

2 Queen

Standard Room 2 Queen Beds, 2 Queen, 215sqft/19sqm-372sqft/33sqm, Wireless internet, for a fee, Coffee/tea maker

Suites

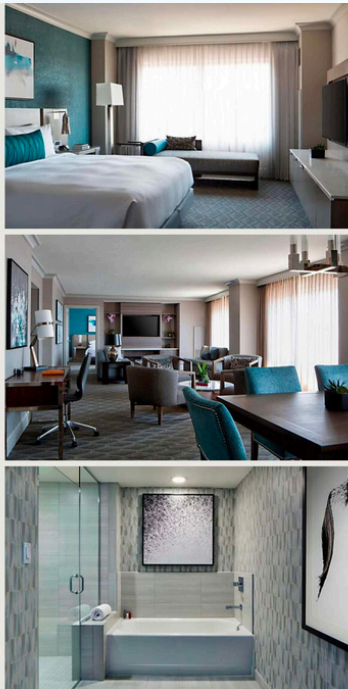


Executive Suite
\$399/night



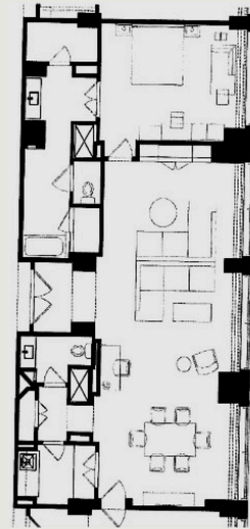
Presidential Suite
\$699/night

Presidential Suite



PRESIDENTIAL SUITE

- King Bed
- 1430 Square Feet
- 2 47" Flat Screen HDTVs
- Floors 16 & 17
- One Connecting Bedroom Available
- High Speed Wireless Internet Avail
- Built-In Wet Bar & 2 Refrigerators
- Two Bathrooms
- Hair Dryer
- Coffee Maker
- Phone Line with Voicemail
- Sitting/Living Area with Sofa
- In-room Safe
- Conference/Dining Table for 6
- Reception Capacity for 30



Enjoy the luxury and spaciousness of our Presidential Suite, boasting separate living and sleeping areas to make you feel even more at home during your stay.

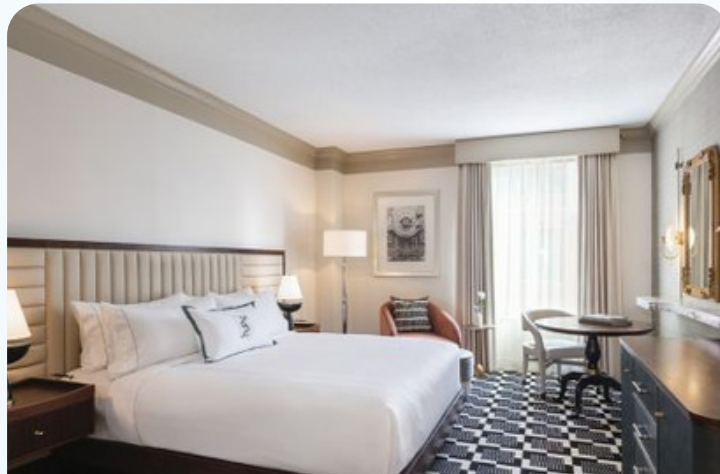
Executive Suite

No additional information.

Omni Severn

40 West Jackson Place, Indianapolis IN 46225

Rooms



Deluxe

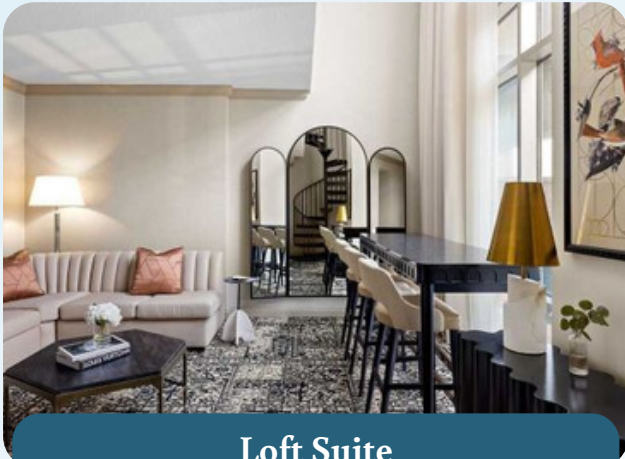
Single/Double Occupancy \$143/night

Triple Occupancy \$153/night

Quad Occupancy \$163/night

No Room Specs Provided

Suites



Loft Suite

Single/Double Occupancy \$419/night

Triple Occupancy \$429/night

Quad Occupancy \$439/night



Persidental Suite

\$1200/night

Suite Floorplans

Loft Suite

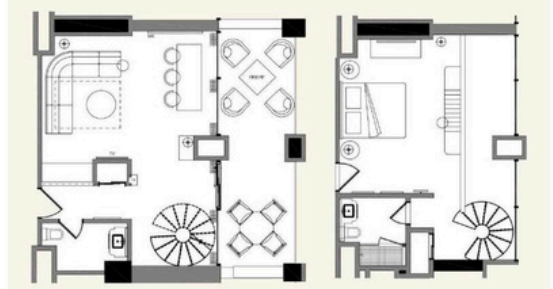
2 Levels - 1 King Bed - Balcony - Sofa Bed

Discover our bi-level suite, where the first floor boasts a living area with a half bath, wet bar, and private balcony. Upstairs, a spiral staircase leads to a serene private bedroom and full bathroom, offering a perfect private retreat.

LOFT SUITES (Bi-Level)

1st Level

2nd Level

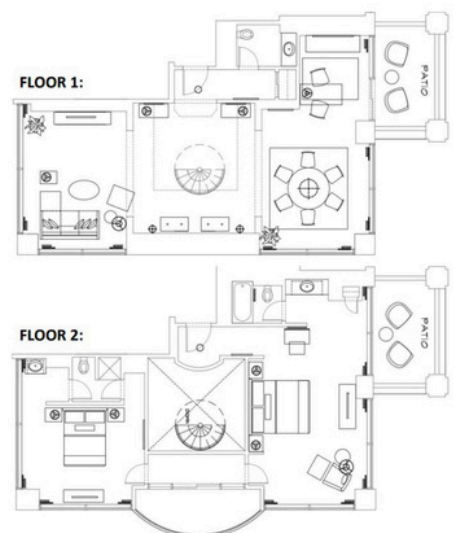


Presidential Suite

Sleeps 6 - 1,344 sq.ft. - Living Room - Dining Area

2 Bedrooms - Private Balcony

Step into the expansive 1,344-square-foot bi-level Presidential Suite, where a grand foyer immediately captures your attention. The first floor seamlessly transitions into a dining area for six, a powder room, a comfortable living room, and a private balcony. A spiral staircase leads to the second level, featuring two bedrooms—one with a king-sized bed and the other with a queen-sized bed—each with its own full bathroom. Throughout the suite, elegant Art Deco-inspired details enhance the luxurious ambiance.



Sheraton Indianapolis City Center

31 West Ohio St., Indianapolis IN 46204

Rooms



**Traditional
King or Queen**
\$139/night



**Deluxe
King or Queen**
\$139/night



Deluxe Corner
\$139/night

Room Specs

Traditional King & Queen

Hotel will include either a King or two Queen beds. King sleeps two, Queen sleeps 4. 300 square feet. Rooms include coffee/tea makers, mini fridge, and desk.

Deluxe King & Queen

Hotel will include either a King or two double beds. King sleeps two, Double sleeps 4. 300 square feet. Rooms include coffee/tea makers, mini fridge and desk. These rooms have a view of the monuments.

Deluxe Corner

Deluxe Corner rooms are all Deluxe Kings. Sleeps up to three people. 300 square feet. Room includes coffee/tea maker, safe, lighted makeup mirror, mini fridge, desk, and connecting rooms can be added.

Suites



Executive Suites
\$239/night



Hospitality Parlor
\$289/night



Presidential Suite
\$389/night

Suite Floorplans

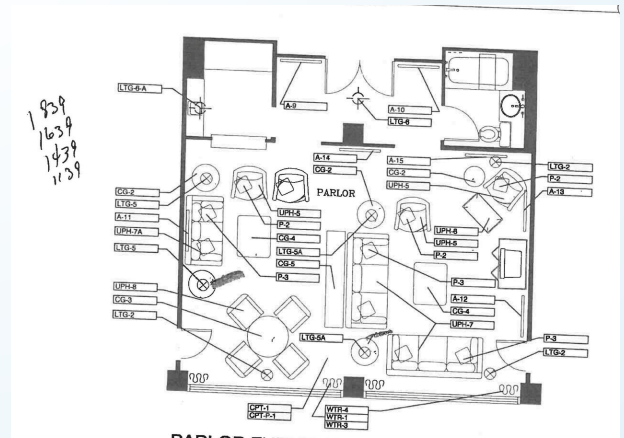
Executive Suites

2 Double, Sofa bed, Mini fridge, Microwave, 600sqft/54sqm, Separate living room, Wireless internet, complimentary, Coffee/tea maker.

Maximum occupancy 5. 600 square feet. Bedroom and living/sitting area. Wet bar, microwave, mini fridge.

Hospitality Parlor

No information provided. Does include Sitting area, Table and Chairs. No bedroom attached.



Presidential Suite

King, Sofa bed, Mini fridge, Microwave, 900sqft/81sqm, Living/sitting area, Dining area, Wireless internet, complimentary, Coffee/tea maker

Maximum occupancy 4, 900 square feet. Connecting rooms available.

Living area, dining area, and sleeping area. Wet bar, table with 4 chairs. Mini fridge, microwave.

Westin

One South Capitol Ave, Indianapolis IN 46204

Rooms



**Traditional
Double or King
\$219/night**

Room Specs

Traditional King

Traditional King Guestroom, 1 King, Sofa bed, Mini fridge, 234sqft/21sqm, Wireless internet, for a fee, Wired internet, for a fee, Coffee/tea maker. Maximum Occupancy 3.

Traditional Double

Traditional Guestroom, 2 Queen, Mini fridge, 234sqft/21sqm, Wireless internet, for a fee, Wired internet, for a fee, Coffee/tea maker. Maximum Occupancy 4.

Suites



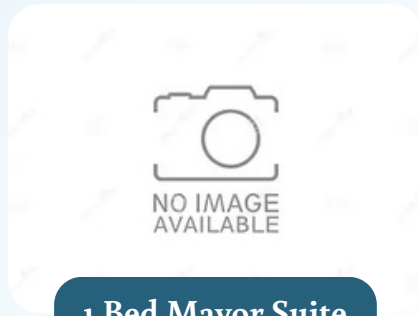
Executive Suite
\$319/night



King Plaza Suite
\$369/night



1 Bed Governor Suite
\$950/night



1 Bed Mayor Suite
\$950/night



1 Bed Capitol or Presidential Suite
\$1150/night

Executive Suite

Suite is either a King or a Double. King sleeps 4, double sleeps 5. Both Suites are 466 Square feet. Both Suites have separate bedrooms.

King Plaza Suite

King Plaza Suite with views of State Capitol or Lucas Oil Stadium, 1 King, Sofa bed, Mini fridge, 590sqft/53sqm, Living/sitting area, Wireless internet, for a fee, Wired internet, for a fee, Coffee/tea maker

Governor Suite

No information provided for governor suite.

Mayor Suite

No information provided for the Mayor suite.

Capitol or Presidential Suite

Presidential Suite, 1 King Murphy, Sofa bed, Bathrooms: 2, Mini fridge, 770sqft/69sqm-855sqft/77sqm, Wireless internet, for a fee, Wired internet, for a fee, Coffee/tea maker.

No information proved for Capitol Suite.

Additional Hotel Rates

Courtyard Indianapolis
Downtown
Run of House \$140/night



Springhill Suites
Indianapolis Downtown
Run of House \$140/night



Fairfield Inn & Suites
Indianapolis Downtown
Run of House \$140/night



Hotel Fact Sheet

Hotel answers to Top Questions

Does suite price include the attached sleeping room/s?

The price is for one guestroom, any adjoining rooms if needed are additional.

Crowne Plaza:
Yes.

Sheraton:
The Parlors do not include the connecting rooms. The presidential includes the bedroom but the bathroom is in the public space.

Hyatt Regency:
The One-Bedroom Deluxe Suites are both complimentary, which includes the parlor area and the attached king guestroom.

Westin:
The price includes 1 bedroom and parlor

Omni:
The Loft Suite (699sq.ft.) and Presidential (1,344sq.ft.) are both priced on the attached addendum.

Downtown Marriott & JW Marriott:
The price does not include the connecting guestroom(s).

Are video tours available of Suites?

Hilton:
3d tours - <https://visitme.co/KrXFLc>

Crowne Plaza:
Yes. No link provided. See Hotel Spec sheet.

Sheraton:
Video Tour & Photos - www.marriott.com/indsc.

Hyatt Regency:
Yes, you can use the link here: <https://truetour.app/properties/1481/experiences/54894?shareId=219359>. If you go to "3D Models" on the left hand side, then "Guest Room & Suites" you can get a 360 degree view of the suites (please note, the 360 model shows a 2-Bedroom Deluxe Suite, however your group will have a 1-Bedroom Deluxe Suite with the king guestroom).

Sheraton:
Attached photos on Spec Sheet.

Omni:

Here is the virtual link for the <https://visitme.co/OLX0Yk>. Presidential photos on spec sheet.

Downtown Marriott & JW Marriott:

[Photos on Spec Sheet.](#)

Is Furniture Removal an Option?

Hilton:

No.

Crowne Plaza:

No.

Sheraton:

No.

Hyatt Regency:

Yes, we can remove the bed if preferred. There will be a \$250 fee for both removing and resetting (\$500 total), per room.

Westin:

No.

Omni:

No.

Downtown Marriott & JW Marriott:

No.

How Much is Parking?

Hilton:

We didn't originally extend a discount for all guests, but we would like to offer a significant discount for ALL guests of \$35 per day/overnight for SELF parking. Our current self-parking rate is \$54.

Crowne Plaza:

\$40 Valet Parking.

Sheraton:

\$55 for Valet only. Garage closed but self park for \$24/day nearby.

Hyatt Regency:

Self-parking is currently \$45/day, and valet operates on a dynamic pricing but is currently within the range of \$59-\$74/day. With the higher demand over these dates, I would assume it would likely be at the higher end of that range.

Westin:

Currently it is \$54 Self/\$60 Valet. As we do not own the garage, these rates are always subject to change. Should these change I will update you.

Omni:

\$56.00 to \$68.00 a night. Pricing is set in place two weeks prior to arrival.

Downtown Marriott & JW Marriott:

Self-parking is \$59 and Valet is \$80.

Guest Access (Key cards required for elevators?)

Hilton:

A key card is not required for the elevators; thus, guests may travel between floors without issue.

Crowne Plaza:

No Key Card Required.

Sheraton:

Elevators are key access. You must have a key to go to the guest room floor. The lobby, lower level meeting space and 21st floor meeting space are the only areas that do not need a room key.

Hyatt Regency:

No, keys are not required to access any floor in the hotel.

Westin:

Floors 3-15 restricted access for guests only for security reasons with key card.

Omni:

No, not that we've been made aware of.

Downtown Marriott & JW Marriott:

Guests can access the 4th floor hospitality suites without using their room key card. For the presidential suites they will need a card.